

LIFF UK Screendance #1

18 May 2017

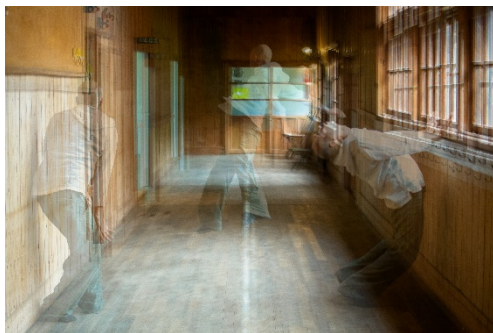
Drama Teatro, Modena



Circle

Özgür Can Alkan | Turkey | 2014 | 5 min

Repetition, division, reproduction; the circle of life. Shot from above, the tracing of the dancer's multiplied bodies generates organic patterns.



Yasushi Shoji

Kenichi Sasaki | Japan | 2015 | 3 min

Dancer Yasushi Shoji playfully sounds out a space, measures it in movement and rhythm. An abandoned primary school provides the evocative setting.



Approaching the Puddle

Sebastian Gimmel | Germany | 2015 | 9 min

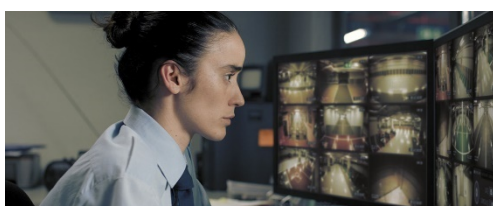
A curious woman and her fabulous yellow wellies undertake a surreal exploration of an empty car park.



To the Ends of the Fingertips

Roswitha Chesher | UK | 2015 | 3 min

A visually rich and surreal tale, which shadows two women as they slip through time on a quest for freedom and fulfillment.



Timecode

Juanjo Gimenez | Spain | 2015 | 15 min

Luna and Diego are the parking lot security guards. He does the night shift, and she works by day. This delightful production won the coveted Short Film Palme d'Or at Cannes 2016.



Maze

Eve McConnachie | Scotland | 6 min

Two young people discover each other as they explore a labyrinthine derelict Glasgow swimming pool. A high-energy contemporary dance piece.



Solo Finale

Ingo Putze | Germany | 2015 | 9 min

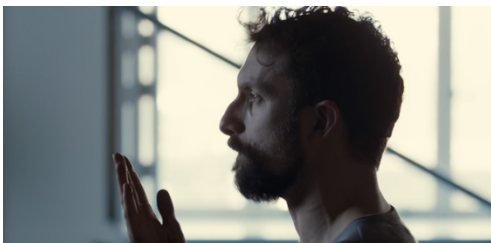
A woman and a man encounter each other in an abandoned opera, where they embark on a bizarre flight between time and space.



Samba #2

Andrea Lerner | Brazil | 3 min

A samba dancer filmed in extreme slow motion. Zoomed tightly to frame the hips of the dancer, the camera dissects a mesmerising, fleshy landscape.



You

Graham Clayton-Chance | UK | 2015 | 10 min

A tribute to the late Choreographer Nigel Charnock. Recreating a section of his 1991 solo work Resurrection. Verbal and physical slapstick reveals dark truths about human relationships.



Diving into your absence

Concha Vidal | Spain | 4 min

A lone female performer slowly emerges from a curious vat filled with an aqueous material.

